

Brockwell Lido

Briefing pack: BLU



27 August 2003

Brockwell Lido

Introduction

fusion

Fusion's vision for the Brockwell Lido is to create a sustainable and viable future, combining the existing character and ambience of this superb 1930s venue, with the benefits of a modern, accessible facility, in turn enhancing and developing the Lido's existing strengths.

Our aim is to create an environment where local people can continue to enjoy simply spending time, relaxing, reading, and socialising as well as taking part in activities and enhancing their well-being. This is the underlying principle of the proposals for the Lido.

As a result, Fusion's proposal for Brockwell Lido is to retain the Lido as the centrepiece, at the heart of the complex, and to develop a range of complementary facilities, which can support this core and enable it to be sustained.

Working together

Over the last 12 months, Fusion has worked in partnership with Lambeth Council, BLU (Brockwell Lido Users) and the Friends of Brockwell Park, as well as service providers at the Lido, including Whippersnappers and the existing

management, to create the new plans. The teamwork approach has ensured the future development of proposals for a wide range of services and facilities, which will truly provide for the local community.

Grade II Listing

Following the recent Grade II listing announced by the Department for Culture, Media and Sport, Fusion is now working with English Heritage and Lambeth Council to develop those proposals. The team is confident that the guidelines will enable the proposals to be further enhanced.

The end product

The £2m+ investment in the Brockwell Lido will provide:

- A renovated and restored Lido and lifestyle health and fitness facility; yoga and complementary therapies; spa/plunge and sauna; new changing areas; flexible space (to be used for community meetings, fitness classes, etc.); an exciting range of children's activities; new café and juice bar; extended range of water based activities.

- All services will be available for the inclusive use of the local community. The Fusion provision and pricing policy ensures access to the same high-quality service and facilities to everyone, regardless of income.
- The on-going development of the service provision will be driven by community desire and need. The active participation of customers and community groups in the development of services and facilities will maintain the Lido as a community venue.

Next steps

Fusion is extremely excited to have the opportunity to develop the Brockwell Lido into a thriving community venue. The coming months will be a time of change at the Lido. When complete, the venue will open as a democratic, inclusive and laid back place to come and relax, enjoy oneself and socialise.

The commitment by Fusion and the Lido project team to support community groups and to specifically reach hard-to-engage groups, will make this an all-inclusive local amenity.

Brockwell Lido

Fusion: A team to deliver

Fusion is a not-for-profit, exempt charity delivering community health and leisure services in South London. Fusion is a local community organisation, offering services at many venues throughout London.

Fusion is passionate about and committed to providing equity in access to health, sports, leisure opportunities in high quality facilities to all members of the community.

Fusion delivers the following at all its facilities:

- High quality services that meet community health, leisure and social needs
- Access to mainstream and specialist activities for all within the community via integrated programmes offered at affordable prices.
- Community-led development of sustainable activities and facilities
- Full stakeholder involvement in the creation and delivery of amenities

Examples of Fusion's delivery in other centres are shown opposite. Fusion is committed to sustaining the unique ambience of Brockwell Lido and ensuring its availability for future generations.



fusion

BLU

briefing pack

2

Brockwell Lido

Brockwell Lido

An important local facility

Brockwell Lido was designed by HA Rowbotham and TL Smithson, architects in the London County Council Parks Department. Brockwell Park bathing pond, which had been deemed too unhygienic for bathing, was replaced by the Lido in 1937.



1938

The Lido rapidly became a much-loved local amenity, enjoying huge popularity. The Lido was closed in 1990.



1948

The Lido was re-opened in 1994 after considerable local demand and has since attracted London-wide publicity. It is regularly packed to capacity on hot summer days.

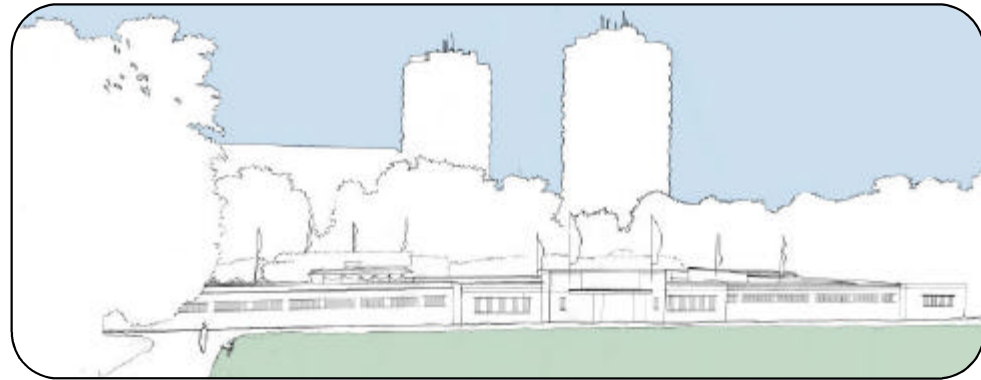


1990s

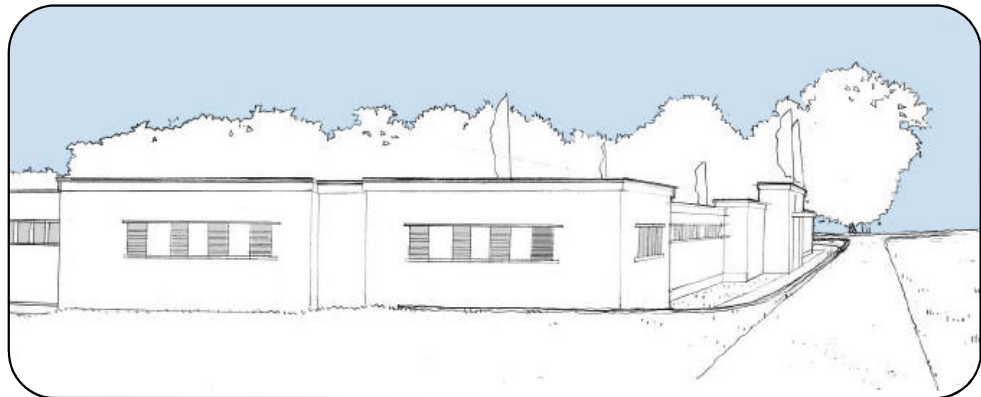
Brockwell Lido

A sustainable new future

Fusion is planning to invest approximately £2m in Brockwell Lido, funded through loans, and Fusion's own reserves. This funding is available to commence the regeneration of Brockwell Lido immediately. The range of activities which would be created at the Lido would provide a sustainable and robust financial foundation to secure the future of the Lido's primary activity, open-air swimming and a 'holiday' experience for residents of south London.



Brockwell Lido sketch, view from south [POLLARD THOMAS & EDWARDS ARCHITECTS]



Brockwell Lido sketch, view from west [POLLARD THOMAS & EDWARDS ARCHITECTS]

Brockwell Lido

An exciting range of activities



A pleasant place to relax



Vibrant health and fitness



Exciting children's activities



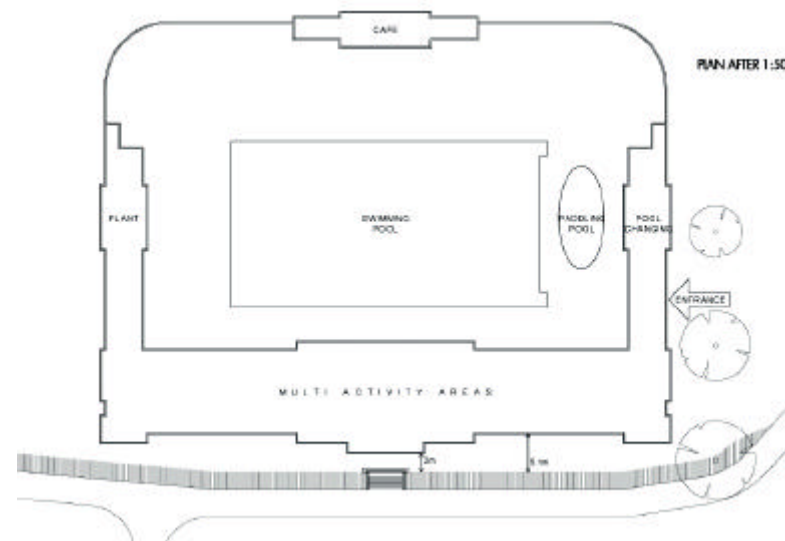
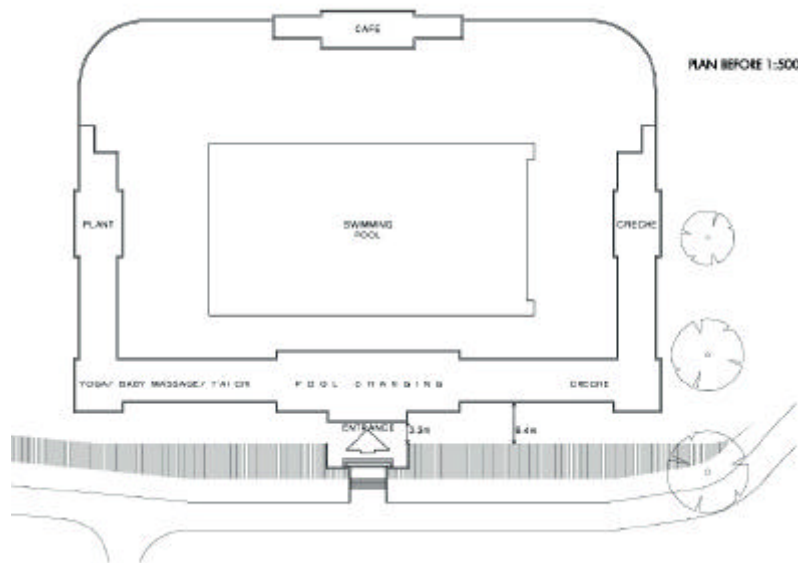
Wellbeing for mind and body

Fusion's proposals will enable the Lido to become a sustainable facility, which meets a wide range of community needs. The proposals will include existing service providers at the Lido such as Whippersnappers, yoga and baby massage, and will also include a lifestyle health and fitness facility, a spa/plunge and sauna, new changing areas and flexible space which can be used for community meetings, fitness classes and a range of other uses.

An exciting programme of children's activities will also be introduced, and Lido users will benefit from an enhanced café and a new juice bar. Fusion proposes to maximise the use of the Lido pool by providing a range of water-based activities such as canoeing and diving clubs, which are not reliant on sunny weather.

Brockwell Lido

Indicative plan



The design of the refurbished Brockwell Lido includes an extension of the southern wing of the building complex by 6.5metres. This approach is strongly supported by English Heritage because it is seen as a way of providing the floorspace required for the Lido to become economically viable, in a way which will enhance the historic character of the building. The southern elevation will be rebuilt in a manner that is in keeping with the existing elevation.

Brockwell Lido

Stakeholder involvement

Management structure and consultation mechanisms

Fusion is a community-based organisation, committed to involving local people in all decisions concerning the Lido, and its primary objective is to provide facilities and services in the interests of the social and physical welfare of people living or working in south London. It is proposed that the Steering Group is established as the formal consultative body for the Lido to enable it to be involved in all the strategic and operational decisions affecting the Lido, including the design proposals, pricing, service development and a range of other important issues. In addition, Fusion will establish a regular programme of consultation, including customer feedback questionnaires, outreach surveys and issue-based consultation.

